

Lightning mastered

April 2010





Greeting from INDELEC President

From the 1955 small electrical contractor to the 2010 world-leading advanced lightning protection system group, INDELEC Group has changed a lot and gained a considerable international exposure. The Group keeps on expanding worldwide with the recent openings of our offices in India and Vietnam as well as innovating to secure its technical leadership with unrivaled products (Prevectron[®] air terminals, advanced lightning counter, StorMonitor[®]...).

But, besides the figures and statistics, I am first of all proud of the dedication of each of us to make this success real.

- Dedication and professionalism of INDELEC Group staff: The company is enjoying an exceptionally low turnover and the loyalty this brings provides a guarantee of our levels of expertise and efficiency.
- Dedication of our partners, representing INDELEC in more than 60 countries worldwide with the highest level of lightning protection engineering. This long-lasting and fair cooperation allows utmost resilience of the Group and its partners through recent economic turndowns.
- And above all, dedication of our clients to INDELEC brand. Amidst a growing offer, our clients maintain their choice of reliable, safe, efficient and innovative lightning protection solutions from INDELEC.

I am also extremely proud of our Group commitment into sustainable development. Eco friendly solutions have been integrated a long time ago in our factories (manufacturing, packing, transportation...). Since 2007, the **Fair Planet** *by Indelec* association, financed by the Group and its Clients, is allocating funds to local projects to promote access to the Education and Health in developing countries for a more equitable world.

INDELEC Group strategy will remain unchanged, focusing on uncompromised quality and lightning engineering expertise. Our dedication, our clients' confidence, our involvement into Standards organizations and professional specialized associations, our massive investment into R&D are the key factors of our success and sustainable growth.

A handwritten signature in black ink, consisting of a stylized 'A' followed by 'L' and 'E' characters, with a long horizontal stroke underneath.

Arnaud LEFORT
President



Address:

61 Chemin des Postes
59500 DOUAI – France

Phone:

+33 (0)327 944 942

Fax:

+33 (0)327 944 955

Website:

www.indelec.com

Date of creation :

1955

Activities:

Manufacture, marketing and installation of
Lightning Protection System, Surge
Protection Devices, Lightning Detection
Systems and Obstacle Warning Lights.

Status:

Private Limited

Paid-up capital:

500 000 Euros

Registry Number:

RCS DOUAI B 045 550 506

C.E.O.

Mr Arnaud LEFORT

Annual Turnover:

20 million Euros (2009)

Number of employees:




130



INDELEC SA

 Manufacture - Marketing - Trading
 Douai - France



**LIGHTNING PROTECTION SYSTEMS
 INSTALLATION FRANCE**

	INDELEC North Douai - France
	INDELEC West Rennes - France
	INDELEC South West Bordeaux - France
	INDELEC South East Lyon - France
	FORSOND Paris - France
	PROTIBAT STRASBOURG - France

**TRADING
 FRANCE - EXPORT**

INDELEC Trading Dept Douai - France
INDELEC Export Dept Douai - France
INDELEC INDIA Bangalore - India
INDELEC Asia Rep Office Ho Chi Minh City - Vietnam

OTHER BUSINESS

	B.C.M Survey Control & Maintenance Douai France
	C.T.A. Pylons Manufacturer Calonne - FRANCE
	DELTA BOX - SERA Obstacle Warning Lights France





2008 - 2009

Opening of INDELEC India Branch Office (Bangalore-India) and INDELEC Asia Representative Office (Ho Chi Minh City-Vietnam).

2007

A new and ambitious sustainable development policy is a new priority for the Group : waste treatment, usage of recyclable packaging, creation of Fair Planet association.

2005

All the INDELEC Group companies are audited and received the QUALIFOUDRE certification.

2004

The leading French manufacturer of Obstacle Warning Lights DELTA BOX joins INDELEC Group of companies.

2002

The INDELEC group gets a new head office in Douai, northern France

Certification ISO 9001 2000

1999

Our first BVQI ISO 9002 certification

1996

Launch of the Precvectron® 2: Indelec's leading product

1993

An industry first: Indelec conducts the first ever tests under real lightning conditions (Florida, USA)

1989

Opening of our first regional office in Lyon, shortly followed by Bordeaux

1986

Indelec invents the Precvectron® lightning conductor

1982

Indelec moves to its current location in Douai, northern France

1974

Export department opens leading to our first international sales

1955

Indelec is founded in Douai. Business begins on a national scale.



Our Vision

We are living in an increasingly booming and fast changing world where safety and sustainability are key issues. Still, lightning remains a unexpected and extremely harmful threat for persons, buildings and equipment.

INDELEC vision is to offer the highest quality of engineering to deliver the safest and most cost effective solutions to manage the lightning risk. Uncompromised quality, massive R&D investments, staff excellence and lightning-business focus are our main assets to "master" lightning.

Our Values

▪ Uncompromised Quality

Due to the specificities of our core business, dealing with an extremely unpredictable and powerful phenomenon, there is no room for compromise. Mastering lightning induces a permanent quality improvement process, that goes far beyond the usual Quality certification requirements.

▪ Engineering excellence

Private-owned High Voltage (one million Volt) Laboratory, R&D department gathering top-class engineers, testing in real lightning conditions in cooperation with international organization and universities, intensive training, involvement in major Standard committees (IEC, CENELEC, UTE...) and specialized organization (GIMELEC, International Lightning Protection Association...). INDELEC gathers the highest level of competences and knowledge in the Lightning protection field.

▪ Integrity and Transparency

We treat people with respect and fairness and give clear, motivating and constructive feedback. Thanks to INDELEC representation in more than 60 countries worldwide, we are open-minded, curious, willing to discover and preserve cultural diversity. We are also promoting business ethics and dedicating ourselves to maintain a high sense of values and conduct honest and fair practices with our partners and clients.

▪ Safety-minded

By nature, the lightning protection business conducts INDELEC to consider safety as a major concern. At each stage of the process, from the production of the air terminals to their installation on site, INDELEC staff is permanently involved in meeting the company safety standards.



For nearly 60 years, INDELEC Group has been growing while focusing on its core business: Lightning Protection.

The company has always wanted to keep a full control on its lightning protection equipment, from the manufacturing process up to the installation on site.

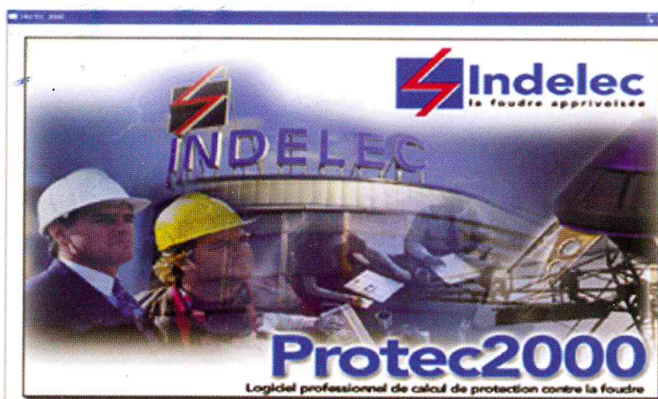
The manufacture of INDELEC world leading ESE air terminals is located in Douai - France in order to secure the highest level of quality to each end user. The production process, while following extremely demanding quality process and controls, has been constantly improved and reaches now the highest level of technology in this industry.

Besides, INDELEC proposes to its customers a complete range of services associated to its products, in accordance with the French and international standards and regulations:

Our specialized consultants are designing tailored-made lightning protection systems in accordance with the latest standard and regulations versions: application of the "rolling Sphere theory" to a structure, Early Streamer Emission lightning protection air terminals or meshed cage protection areas, surge protection devices specifications...

INDELEC proposes to the end users in France a complete offer which includes state-of-the-art installation of external or internal lightning protection systems by their own technicians. Highly-skilled technicians are trained and qualified to work in various environment including nuclear or chemical risks...,,

Lightning Protection Systems maintenance is essential since a number of components may lose their effectiveness over time due to corrosion, weather, mechanical impacts, and lightning. INDELEC subsidiary BCM is specialized in the maintenance of LPS installations in France.



INDELEC in-house PROTEC software (risk assessment calculation and LPS design)



INDELEC technicians installing a LPS on a bell tower



Heritage Buildings

At the beginning of the 90's, the UNESCO selected INDELEC to install Lightning Protection System on the Angkor Vat temple. A specific team was air-flown from France to Cambodia for this extremely sensitive operation. Since then, many countries have been trusting INDELEC to protect the national treasures, including the National Museums in Bangkok or Mexico, Notre Dame de Paris and Mont St Michel in France, Acropolis Temple in Greece, the Red Fort in Delhi, India

Industry

Thanks to the renowned quality of its lightning protection solutions and the expertise of its engineers and technicians, INDELEC is cooperating with all the world-leading industrial groups worldwide. Thousands of our systems have been installed on a wide range of industrial sites from textile factories to chemical plants, off-shore oil platforms, food industry, cement plants, car manufacturers....

Buildings

Residential and mixed-use buildings, office towers, shopping malls, hotels and resorts... today, the construction industry tends to propose everyday new engineering challenges: high rise structures, increasingly sensitive M&E equipments, multiplication of networks (power, data, telecom, CCTV etc...). INDELEC must issue tailored-made design in close partnership with the M&E Consultants for each project to propose a reliable, safe and yet cost effective lightning protection system

Infrastructures

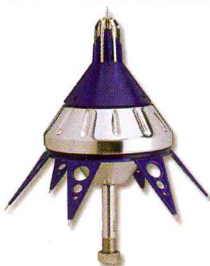
Highway toll gates, bridges, Power Grid, Telecom networks, Airport infrastructures, Gas distribution networks... from the "Vasco de Gama" management company in Portugal to the Korean Gas Corporation or the new Bangalore International Airport authorities, INDELEC is constantly cooperating with highly skilled engineering groups to design reliable and sustainable solutions for key infrastructures.

Recreational Areas

While a Meshed Cage protection is limited to a "built -structure" only, the early Streamer Emission air terminals are used for the protection of open areas: outdoors swimming pools and water parks, stadiums, golf courses, resorts, camping, ski parks, public beaches, university campus.... These are just a few examples of areas protected by INDELEC worldwide.



Direct Lightning Protection



Direct Lightning Protection is our core business and we have built up since 1955 a very unique expertise in this field as well as an extended range of products. Each project is unique and requires a specific design. INDELEC has developed a large range of products to face this "tailored made design" challenge: complete scope of rods, conductors, fixings, grounding rods. The Prevector® 2 ESE air terminals range is definitely the company best seller with several dozens of thousands of units installed worldwide. The R&D department is constantly introducing new evolutions and additional products to this acclaimed range.

Indirect Lightning Protection

Based on the IEC 62-305 series (2006), a lightning protection system must now combine direct and indirect lightning protection : the electromagnetic disturbances created by a lightning discharges are representing a growing danger (overvoltage, fast ageing ...) due to the increasing sensitivity of the M&E equipment (computerization, very low voltage systems etc...). INDELEC lightning protection systems design includes the supply and installation of Surge Protection Devices (SPD) for the main switchboard (type 1), DB's (type 2) as well as specific SPD for Telecom network, data networks, coaxial cable, DC power supply etc...



Lightning Warning Systems



Creating and maintaining a safe working environment is essential to an increasing number of industries and facilities. The fundamental concept of INDELEC's Stormonitor® is to provide timely advanced warning of an increasing threat of lightning to personnel, equipment, and facilities. Warning is followed by actions to cease dangerous project operations, to place equipment in safe configurations, and to shelter individuals safely until the lightning threat has ended.

Obstacle Warning Lights

In 2004, INDELEC integrated the French Burgundy-based company Delta Box. Later on (2007), the Group has also taken over SERA. Both companies merged into the Delta Box-Sera company and are now the largest French Obstacle Warning Light manufacturer. With a large choice of beacons (Low, Medium and High Intensity) that meets all the ICAO requirements, INDELEC added an extremely valuable range of products to its core business.





For more than 35 years, INDELEC has been cooperating with business partners in a large number of countries, including developing countries facing huge challenges fighting against poverty, illiteracy and poor healthcare systems .

INDELEC intends also to become a responsible and influential social contributor and register a new association "Fair Planet by Indelec" in 2007 with the following objectives: finance projects aimed at expanding access to education, health and food in developing countries.

Funds are raised from INDELEC products sales: each client is paying a "Fair Planet contribution" of 1€ per unit and INDELEC is adding 1 € e.g. 2 € collected for each unit. Then the Board is selecting amongst social projects proposed by our local partners or other associations.

In 2008, Fair Planet funds the construction of a greenhouse as well as the drilling of a well and a pump water for the Horticulture Unit of ADP in Bangalore India: The Association for Disabled Persons (ADP) is running this horticulture center for disabled person, providing them a job and resources.

In 2009, Fair Planet decided to finance a French-based association Elevages sans Frontières. It supports rural families in developing countries with micro credit schemes in Senegal.



Horticulture Unit ADP – Bangalore India



ESF center – Ourossogui – Senegal

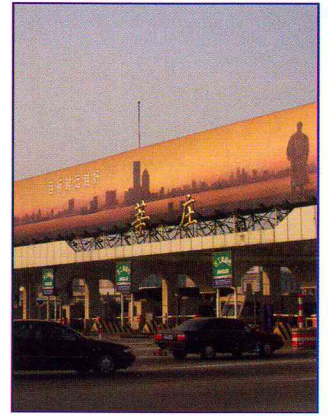
Some References



Vasco de Gama bridge - Portugal



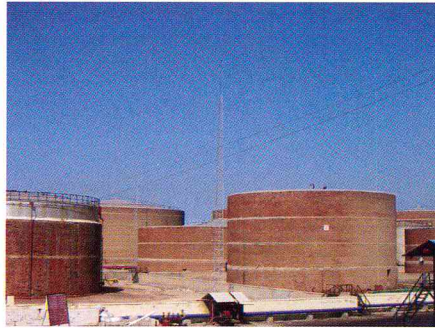
Red Fort-Delhi-India



Highway toll - China



Tower of London - United of Kingdom



MPC petroleum storage in Suez - Egypt



Acropolis-Athens-Greece



Cathedral - Santa Cruz do Sul - Brazil



The Glass House condominium - Colorado - USA



Chinese University - Hongkong



Angkorwat temple - Cambodia



Roppongi-hills - Tokyo - Japan



Notre Dame - Paris - France



World cup stadium - Daejeon - Korea



INDELEC SA- Headquarter

61, chemin des postes - 59500 Douai - France
Phone: +33 327 944 944 - Fax : +33 327 944 945

INDELEC SA- Export Department

61, chemin des postes - 59500 Douai - France
Phone: +33 327 944 952 - Fax : +33 327 944 945
④ www.indelec.com

INDELEC Branch Office in India

#61, Ground Floor, 2nd Main Road, Koramangala 1st Block,
Bangalore - 560 034 - INDIA
Telefax: +91 80 4097 3813
④ www.indelecindia.com

INDELEC Asia Representative Office

Officespot Building, Unit 101, 79C Dien Bien Phu Street, Da Kao Ward, District 1
Ho Chi Minh city - Viet Nam
Phone: + 84 8 629 149 52 - Fax: +84 8 629 914 85
④ www.indelevn.com